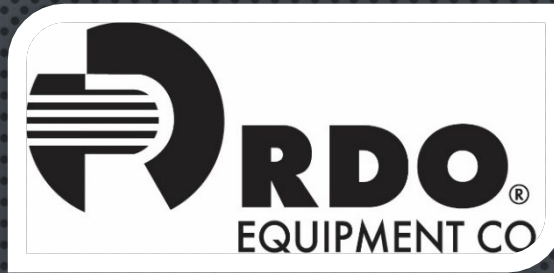




BUILD 
MONTANA

**A Workforce Initiative of the
MCA Education Foundation**

A Construction Industry Experience



A Construction Industry Partnership



Construction Machine Operation I Program Outline

- Seniors on track to graduate
- Spring Semester - January – May
- 1:15pm – 3:15pm each day/ Bi-weekly
- Divided into groups between manufacture partners

Course Number	Course Title	Theory Hours	Lab Hours	Total Clock Hours
Intro 1	Introduction to the Construction Industry	1		1
Unit 1	Safety	4	2	6
Unit 2	Machine Components & Function	14	4	18
Unit 3	Heavy Equipment Machine Operation	6	10	16
Unit 4	Machine Maintenance	1	4	5
Unit 5	Construction Engineering & Survey	2	2	4
Unit 6	Technology in Construction	2	2	4
Unit 7	The Construction Career Experience	2	24	26
	TOTAL	32	48	80



CURRICULUM RESOURCES

- MANUFACTURER SUPPORT - JOHN DEERE, CATERPILLAR, VOLVO
 - CERTIFICATION CREDITS - ONLINE & INSTRUCTOR LED MODULES
- OCCUPATIONAL SAFETY & HEALTH ADMINISTRATION(OSHA)
 - OSHA 10 CERTIFICATION
- SP2 CONSTRUCTION SAFETY – ONLINE COURSE
 - CONSTRUCTION SAFETY & WORK ETHICS
 - TOOL MAINTENANCE – WD 40 CERTIFICATE
- HANDS ON EXPERIENCES



BUILD MONTANA SIGNING DAY

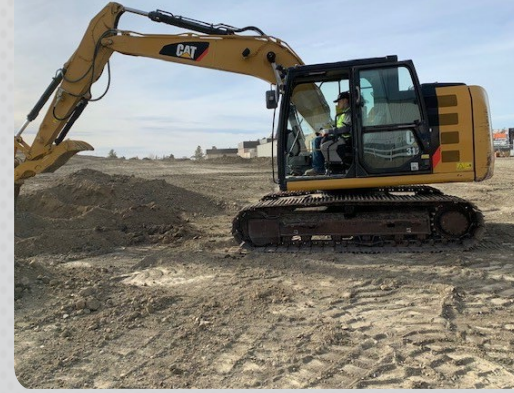




SAFETY



MACHINE COMPONENTS AND FUNCTION



HEAVY EQUIPMENT MACHINE OPERATION



MACHINE MAINTENANCE



CONSTRUCTION ENGINEERING & SURVEY

TECHNOLOGY IN CONSTRUCTION



CONSTRUCTION CAREER EXPERIENCES



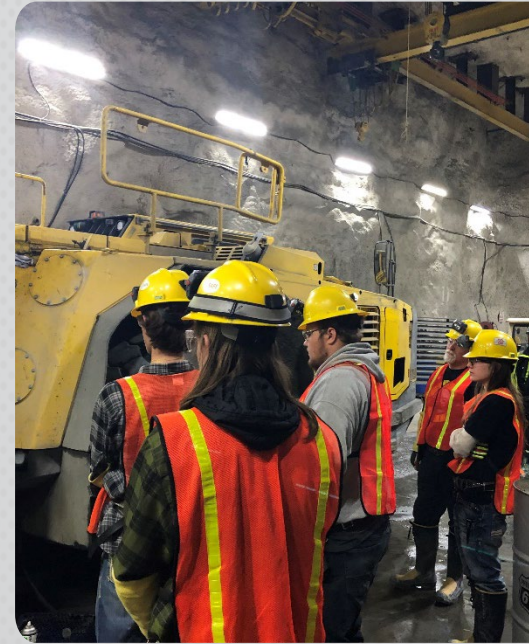
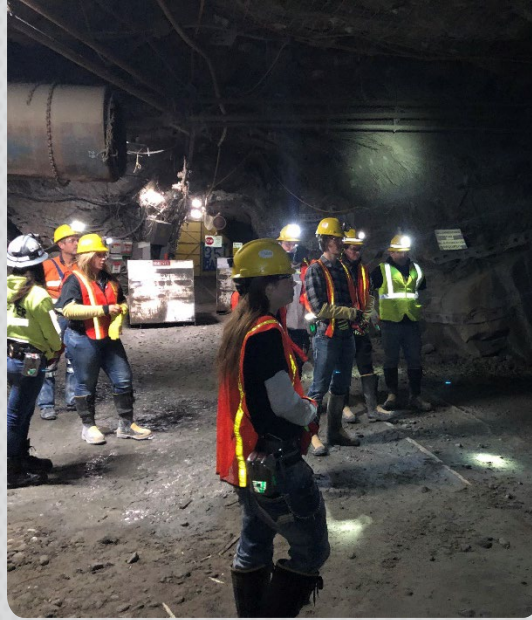


CRUSHER/AGGREGATE OPERATIONS



CONSTRUCTION CAREER EXPERIENCE

SEWER UTILITY PROJECT



MINING CAREER
EXPERIENCE

DIG IT DAY!





BUILD MONTANA GRADUATION





Challenges & Considerations

- TIME COMMITMENT - 15 – 20HRS EACH WEEK/NOT INCLUDING PRESENTATIONS, COORDINATING EXPERIENCES
- GETTING THE RIGHT PERSON INVOLVED AT THE SCHOOLS – CTE TEACHER, PRINCIPLE, CAREER COACH/COUNSELOR, SUPERINTENDENT
- STUDENT SCHEDULING – BI-WEEKLY PROGRAM SCHEDULE
- BUILDING THE PARTNERSHIPS - OTHER DEALERS/CONTRACTORS ON BOARD WORKING TOGETHER
- MANUFACTURER RESOURCES – ONLINE TRAINING ACCESS/EXPERIENCE LEVEL



BUILD 
MONTANA

**A Workforce Initiative of the
MCA Education Foundation**

Questions

Thank you for your Interest!